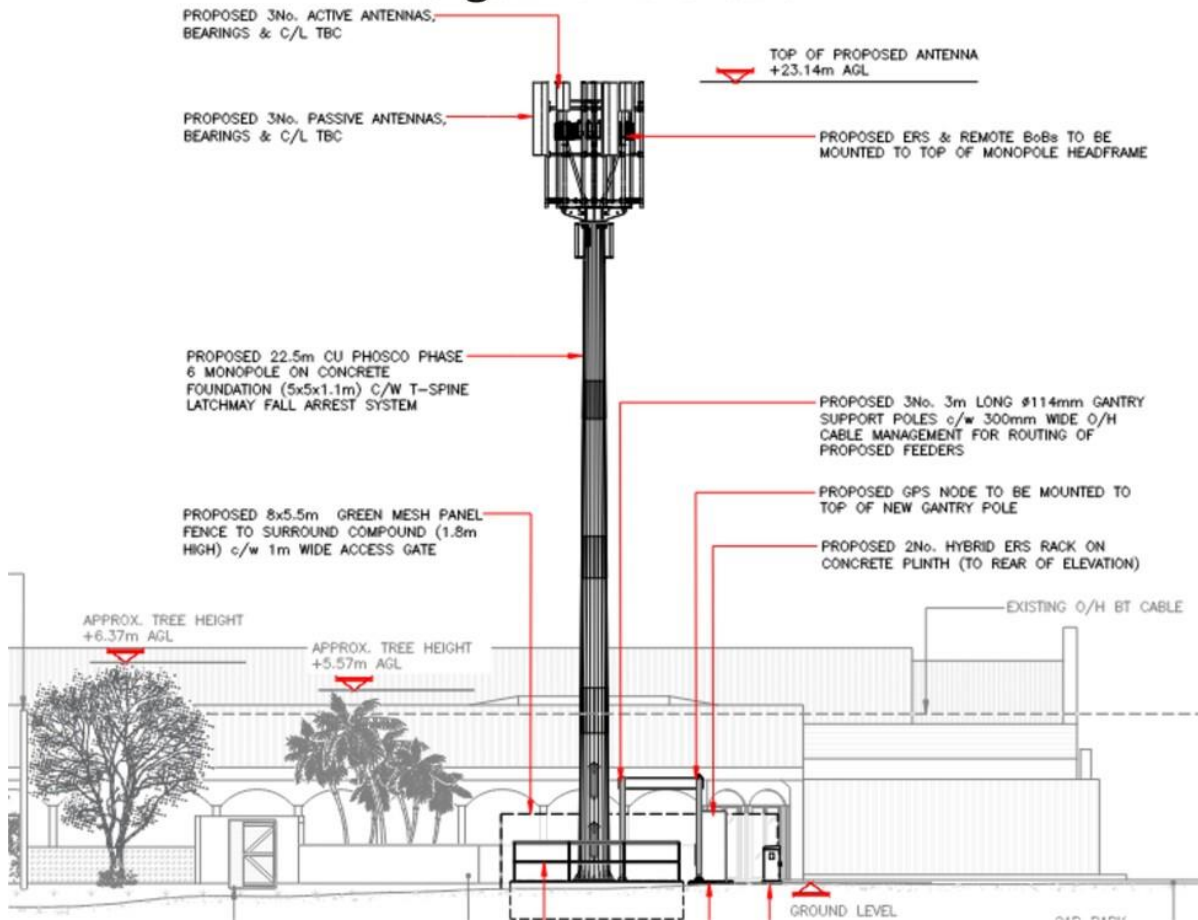


DONIFORD BAY HOLIDAY PARK WATCHET TA23 0TJ Gigantic Installation



Somerset Planning for Watchet Doniford Tower

<https://www1.somersetwestandtaunton.gov.uk/online-applications/applicationDetails.do?activeTab=summary&keyVal= WSC DCAPR 32751>

It is easy to make a comment to support or object, follow link above and click on "make a comment" . Write your comment beforehand and then copy and paste into the box provided

WATCHET MAST OBJECTION COMMENT POINTS. Copy and paste if wanted.

If you are unsure about microwave communication towers. Look below. First, an explanation of the criteria the planning department take note of, or ignore. Then, points for this site that will be taken note of. Lastly and sadly, some links to studies on microwave radiation and effects, which you may want to see first.

IT IMPORTANT TO USE Objections the Planning Dept are obliged (criteria) to recognise first (Ugly etc) and then, radiation health points in your comment

1. Appearance not in keeping with surroundings. This is an area of outstanding natural beauty, located at the foot of the Quantock Hills on scenic coastline. This proposed mast will be very tall (over 23 metres). It will have a large overbearing group of transmitter boxes attached at the top. This will be wide and make the mast look unsightly and very noticeable.

2. As given in the planning application constraints: It is on Heritage Coastline.

a, It is in an area of Special scientific interest for nature conservation.

See scientific studies from 2021. Effects of non-ionizing electromagnetic fields on flora and fauna, part 1. Rising ambient EMF levels in the environment

B Blake Levitt et al. Rev Environ Health. 2021.

These links are for your research to quote

from <https://pubmed.ncbi.nlm.nih.gov/34047144/>

Very good alternative: <https://www.degruyter.com/document/doi/10.1515/reveh-2021-0050/html>

b, The area is of archaeological interest.

3. The applicants have not provided an Environmental Impact Assessment, an Ecological Report or a Heritage Statement as required. They have not acknowledged the above site specifics, maybe hoping that it will be overlooked.

4. Environmental Impact – It will use alot more energy than previous generations: When taking this into account, 5G would consume 3-3.5 the power of 4G per base station or the equivalent of 73 homes in the UK. On top of this, they are planned to be far more in number than previous generations, their intended use is almost

limitless so the devices utilising the signals and signalling back will be huge in number too. Huawei state: "Currently energy use accounts for the majority of network costs". In the case of the largest operators' overall energy usage it approaches 90% or more. BT is the joint-largest private purchaser of electricity in the UK.

- Each 5G mast can consume up to double the energy of 4G masts (it could even be triple depending on the number of channels used) and are planned to be far more in number than previous generations, their intended use is almost limitless so the devices utilising the signals and signalling back will be huge in number too. Huawei state: "Currently energy use accounts for the majority of network costs"

5. It is close to holiday residences and a community building. There is no safety exclusion zone or consideration given to proximity to families with children, who will stay and walk within it's vicinity.

a. Doniford Park Farm activity centre for children is close by. Have they been consulted? It is required to consult schools and children's nurseries near to a proposal such as this.

What are the time periods for determining a planning application?

In Short

The statutory time limits for applications for planning permission are set out in article 34 of the Town and Country Planning (Development Management Procedure (England) Order 2015 (as amended). They are 13 weeks for applications for major development, 10 weeks for applications for technical details consent, and (from 1 August 2021) applications for public service infrastructure development, and 8 weeks for all other types of development (unless an application is subject to an Environmental Impact Assessment, in which case a 16 week limit applies).

From: <https://www.gov.uk/guidance/determining-a-planning-application>

6. Health risks – quote from scientific studies (do not use URL links – the council do not accept these and will not upload your comment)

Example scientific study (the new technology proposed will greatly increase these effects):

Mortality by neoplasia and cellular telephone base stations. Dode et al. (Brazil), Science of the Total Environment, Volume 409, Issue 19, 1 September 2011, Pages 3649–3665

- This 10 year study on cell phone antennas by the Municipal Health Department in Belo Horizonte and several universities in Brazil found a clearly elevated relative risk of cancer mortality at residential distances of 500 metres or less from cell phone transmission towers. Shortly after this study was published, the city prosecutor sued several cell phone companies and requested that almost half of the cities antennas be removed. Many antennas were dismantled.

Another study:

Evidence for a health risk by RF on humans living around mobile phone base stations: From radiofrequency sickness to cancer

Author : A. Balmori, 14 47014, Valladolid, Spain

Received 15 April 2022, Revised 26 June 2022, Accepted 5 July 2022, Available online 14 July 2022, Version of Record 19 July 2022

Quick link to search if you want to see

study <https://duckduckgo.com/?t=ftsa&q=Evidence+for+a+health+risk+by+RF+on+humans+living+around+mobile+phone+base+stations%3A+From+radiofrequency+sickness+to+cancer++++Author+%3A+A.+Balmori%2C+14+47014%2C+Valladolid%2C+Spain&ia=web>

7. If this proposed mast is sited, there will be the potential for more higher powered antennas to be installed without planning permission. This means that more radiation. Higher powered transmitters could be added at any time in the future without consent. What are the specifications of the proposed transmitters? What will their capability be when activated?

[Info Research Links. A few to get started](#)



ScienceDirect

<https://www.sciencedirect.com/science/article/abs/pii/S0048969711005754?via%3Dihub>

Mortality by neoplasia and cellular telephone base stations in the Belo Horizonte municipality, Minas Gerais state, Brazil

